

## JOIN US AT THESE SERVICE TIMES

- **Sunday School** – 9:00 AM
- **Worship** - 10:00 AM & 6:00 PM
- **Children's Church** – will be released from morning worship.
- **Choir Practice** – Tuesday Nights at 7:00 PM
- **Wednesday Midweek** – Small Group 6:30 PM/Kid Adventures 6:30
- **Youth Program** – Wednesdays at 6:30 PM

## TO REACH THE MINISTRY STAFF:

Senior Pastor Mike Schlaegel – Cell: 812-709-0433 or 812-709-9572

Secretary Becky Schlaegel – 812-388-6832 or 812-709-9572 (cell)

Youth Ministries – Reva Troutman 812-508-4471 (Cell)

Phase 3 Ministry (Young Adult Group) – Teri Kerr 812-277-6611 (cell)

Prayer Chain (Tima Hickman) – 812-247-2804 or golftee3@frontier.com

### Greeters:

Today: Minnie Ellen

Next Week: Doug

### Specials:

Today: Choir

Next Week: Praise Team

### Children's Church (Helpers)

Today: Burton's

Next Week: No Children's CH.

### Little Gifts Class:

Today: Lorna

Next Week: Reva

### Nursery:

Today: Michelle

Next Week: Kendra

### Sanctuary Cleaning:

12/25 - Michelle

1/1 - Lorna

### Last Week's Attendance & Offerings

Sunday School: 19 Morning Worship: 72

Evening Worship: 61

Offering: \$1,049 December Total: \$2,861

Budget Needed for December: \$7,800

Needed to meet budget: \$4,939

Mortgage Balance - \$36,954.98

Offering: \$352

Parking Lot Balance - \$3,402.49

Offering: \$0

Kid Adventures- Need for Dec/Jan- \$500

Donations - \$0

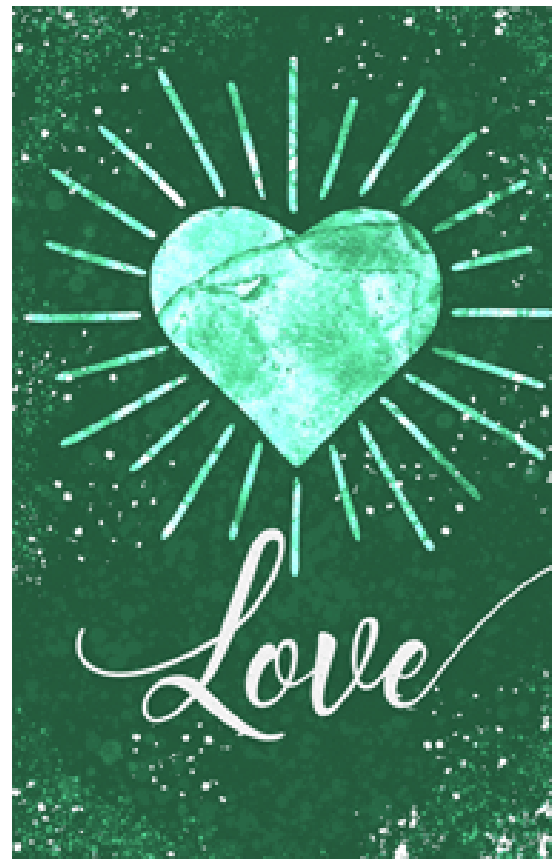
Needed to meet budget: \$450

\*\* Electronic giving by card or echeck is available on the GIVE page of our website [www.doverhillchurch.com](http://www.doverhillchurch.com)

\*\*\* **We have hearing Devices that are available upon request at the sound booth.**

# DOVER HILL CHRISTIAN UNION CHURCH

A HEALTHY CHURCH SERVING CHRIST AND A HURTING  
WORLD



## December 18, 2022

15581 North State Road 450 Shoals IN 47581 Phone 812-388-6832  
Email: [doverhillchurch@gmail.com](mailto:doverhillchurch@gmail.com) <http://www.doverhillchurch.com>  
Text in Church Number: 812-612-7840

# DOVER HILL CHRISTIAN UNION CHURCH

A Healthy Church Serving Christ and a Hurting World

**December 18, 2022**

---

## Morning Service 10:00 AM

Pastor Mike Schlaegel – Advent - A Christmas Experience –  
“Leaving Christmas Another Way” –  
Matthew 2:12

Special – Choir

Choir Practice – No Practice This Week

## Evening Service – 6:00 PM

Christmas Cantata

---

**Welcome to Church. We would like to wish your family a Merry Christmas.**

## Wednesday Night Services

There will be no Kid Adventures, Youth Group or Small Group this Wednesday (12/21) or Next Wednesday (12/28) due to Christmas break, please spend this time with your family and friends. We will resume again on January 4<sup>th</sup>.

## Church Extension Project

December Challenge is to send a Christmas card to someone who doesn't attend our church. For more information see Ann.

## Christmas Eve Service – December 24<sup>th</sup> at 6:00 PM

Please join us on December 24<sup>th</sup> at 6:00 PM for our Christmas Eve Candlelight Service.

## Christmas Cantata – Tonight at 6:00 PM

Please come out and support Hannah and the choir as they present “Unto Us a Child Is Born.”

## Christmas Communion– December 25<sup>th</sup> at 10:00 AM

Please join us as we Welcome Christ's Birth with Communion.

# PEOPLE & MATTERS NEEDING PRAYER

Servicemen & Women  
Unsaved in Community  
Raymond Woodsmall  
Delilah Burnette  
Joe Schlaegel  
Cliff Goodman  
Abby Keith  
Chelsie Carver  
Rob Witt  
David Mitchell family  
Norma Harding family

Our Missionaries  
Nation & Leaders  
Lee Beard family  
Kevin Stewart  
Harold Sipes  
Sharon Richer  
Janice Read  
Angel Heshelman  
Darren Wagler  
Mary Peeks family  
Byler family

---

## Monthly Prayer Focus – God's Presence

### Christmas Cards

Christmas card “postage” will go to Missions for future use. Suggested “postage” is 25 cents per card, however, donations are not required to participate. Always fun to get Christmas cards each year. We have been doing this for probably the last 40+ years. Lists are on the table in the foyer. Card boxes are out, please check the boxes each week for cards (also if you know of someone that can't attend, please make sure and take their cards to them).

### Young Adult Ministries Event

All Young Adults are invited to participate in Phase 3's first “Clue-solving Face Race” on January 14<sup>th</sup> in Loogootee. Mark your calendars. For details, contact Teri Kerr, or watch the bulletin for further details.

### Upcoming Events – December

18<sup>th</sup> – Christmas Cantata – 6:00 PM  
24<sup>th</sup> – Christmas Eve Service – 6:00 PM  
25<sup>th</sup> – Christmas Communion – 10:00 AM  
31<sup>st</sup> – New Year's Eve

**Mortgage Campaign Fund: \$7,446.46**